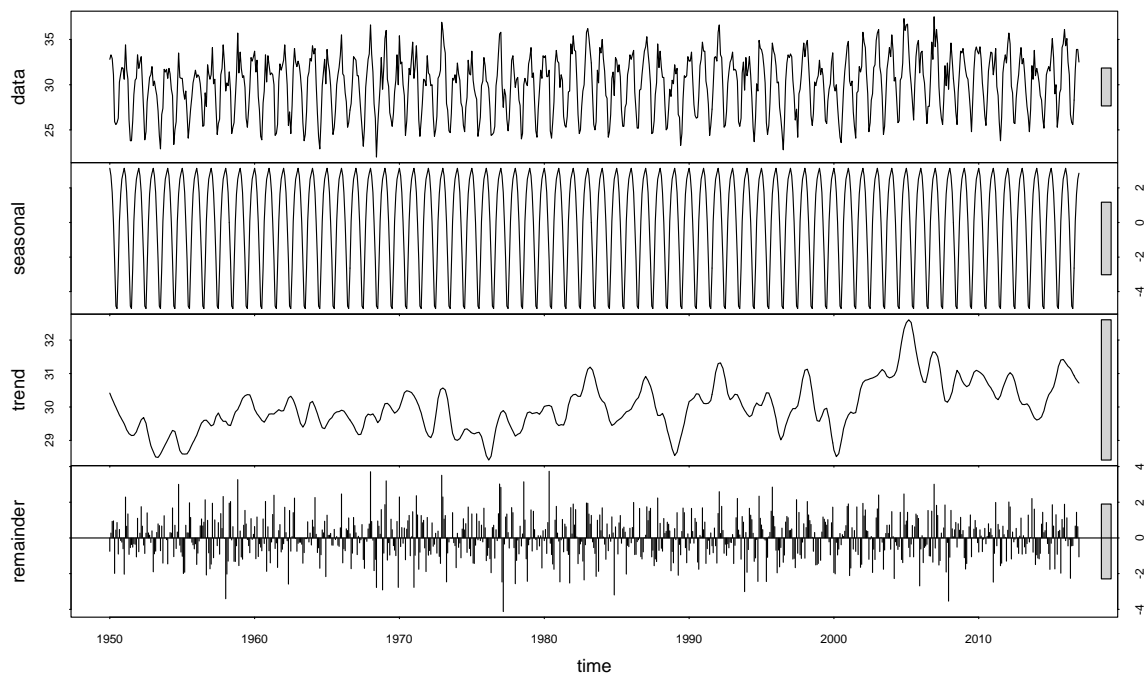
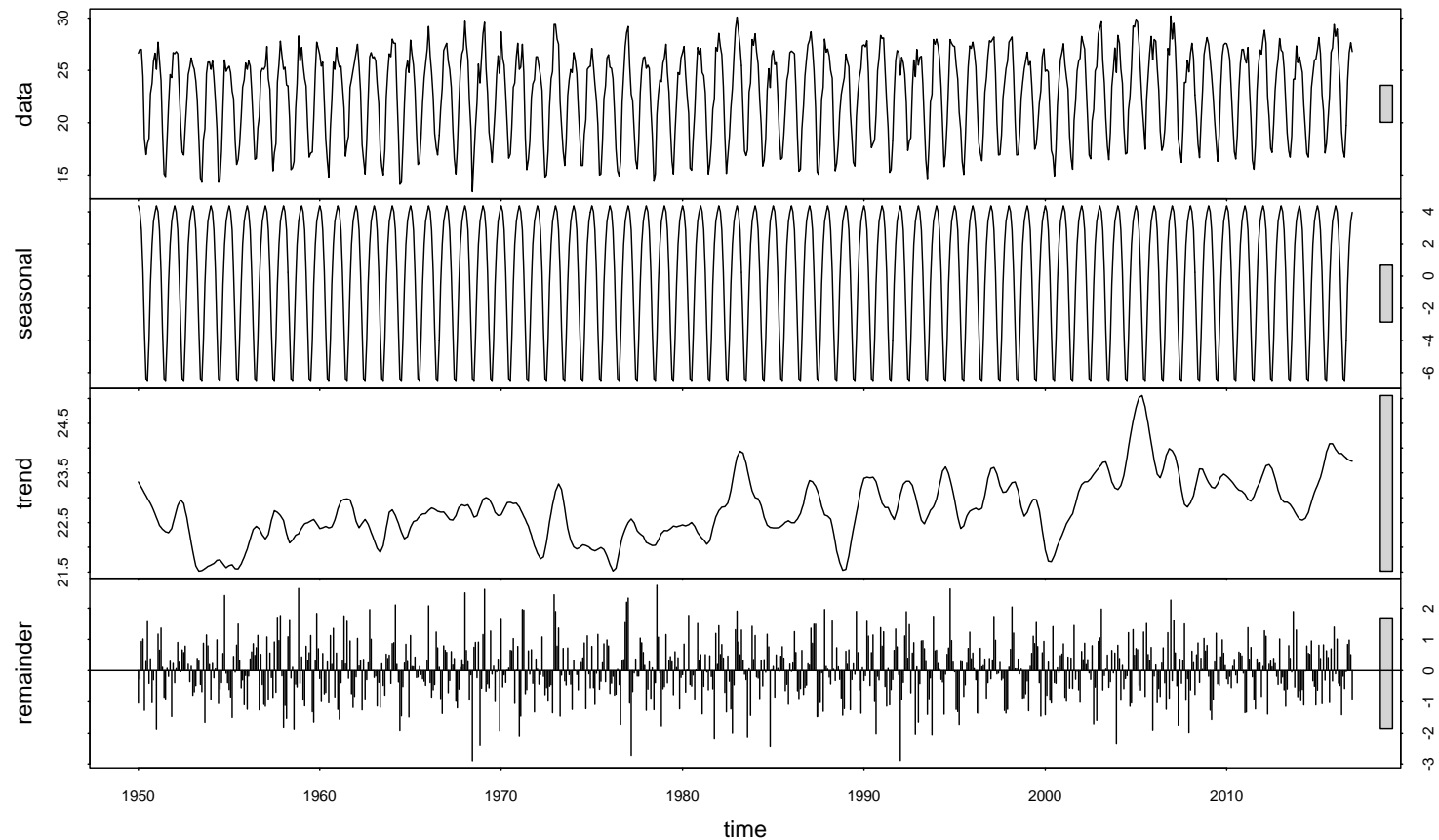


HOW TO CITE:

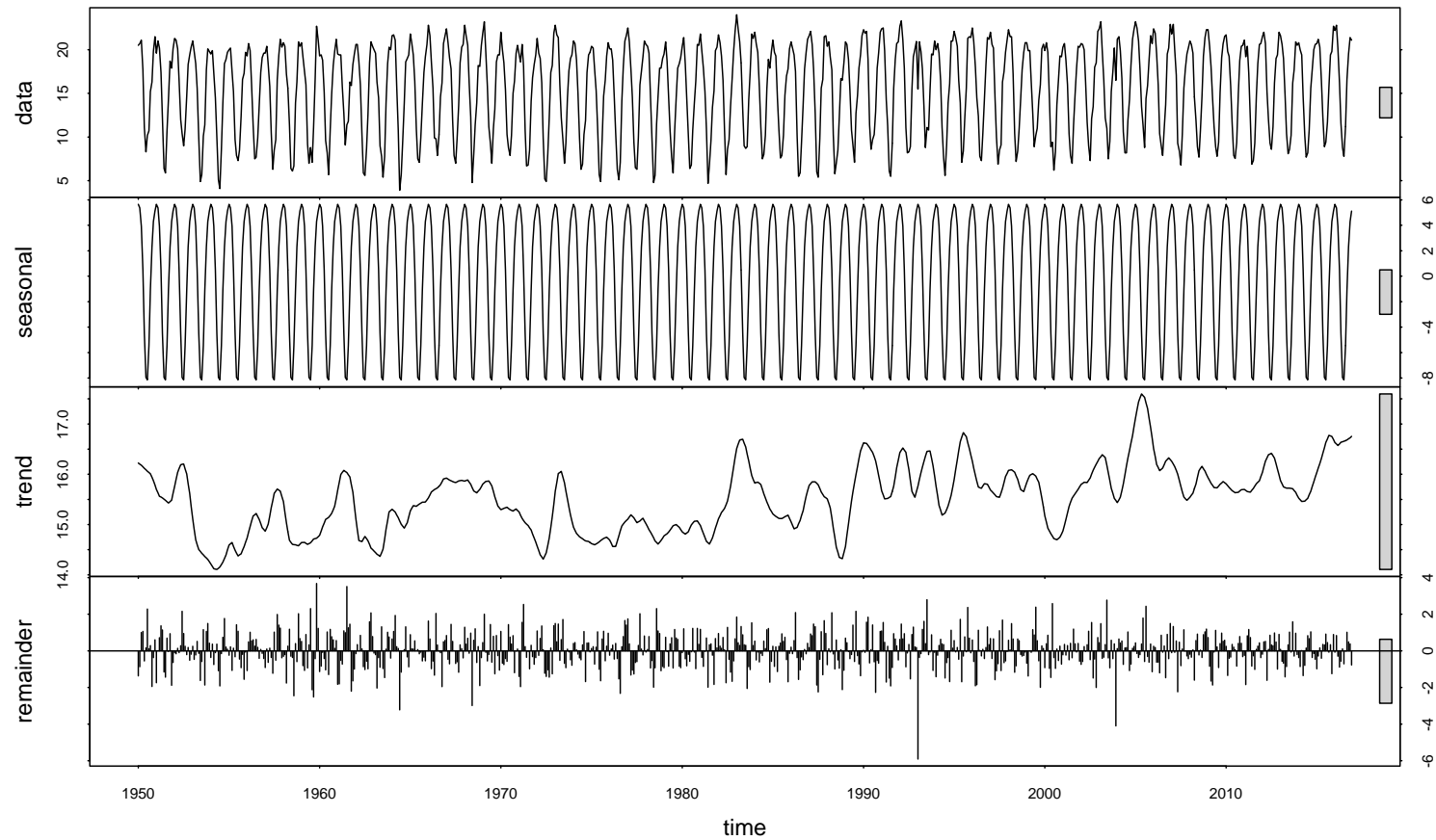
Nyoni NMB, Grab S, Archer E, Malherbe J. Temperature and relative humidity trends in the northernmost region of South Africa, 1950–2016 [supplementary material]. S Afr J Sci. 2021;117(11/12), Art. #7852. <https://doi.org/10.17159/sajs.2021/7852/suppl>



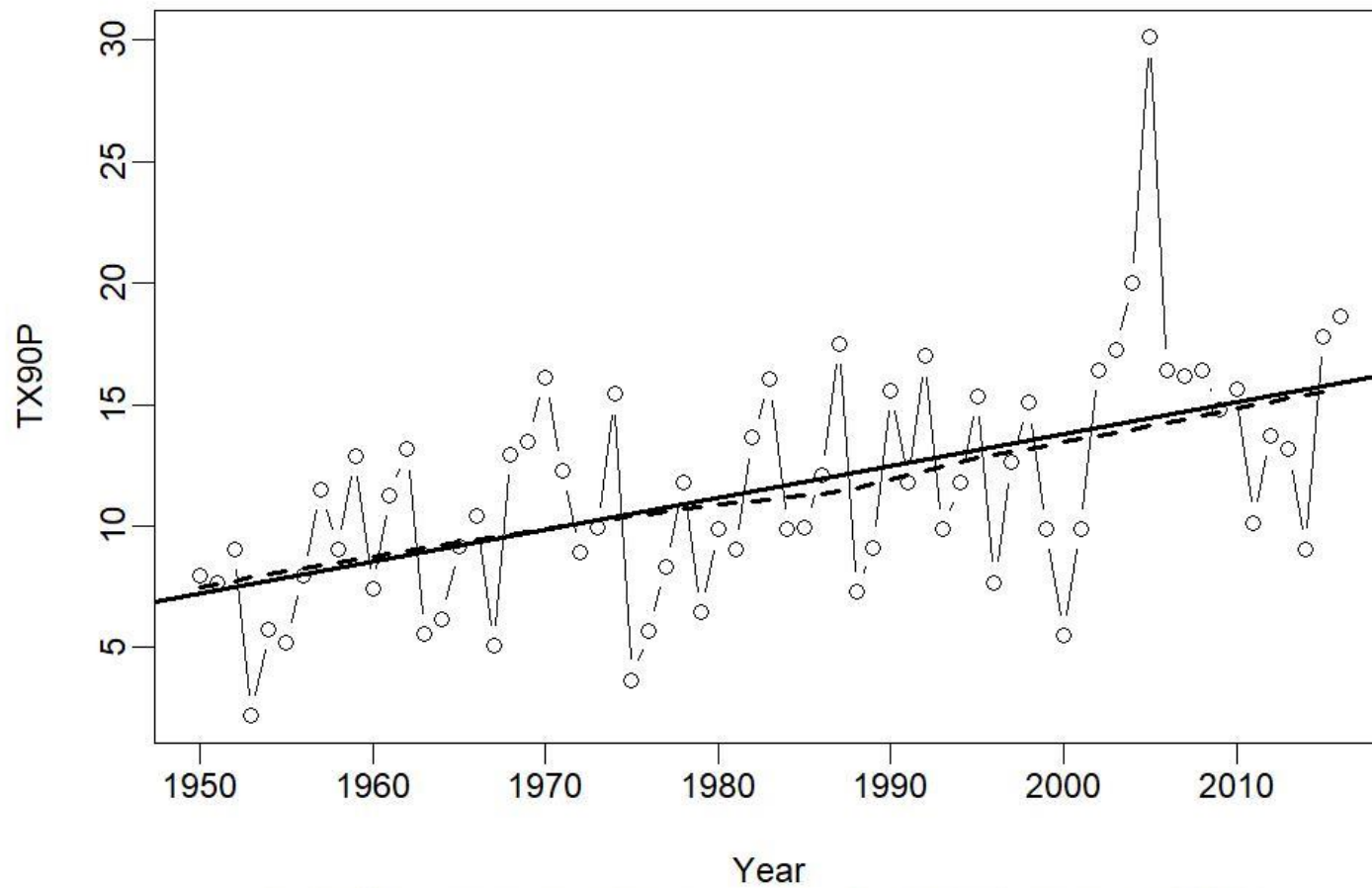
Supplementary figure 1: Seasonal and trend decomposition of maximum temperatures (°C) for northernmost Limpopo Province, 1950–2016. ‘Data’ = set of actual values; ‘seasonal’ component = period; ‘trend’ = increasing or decreasing direction in the data; and ‘remainder’ = residual. The grey bar at the right-hand side of each graph allows for a relative comparison of the magnitudes of each component.



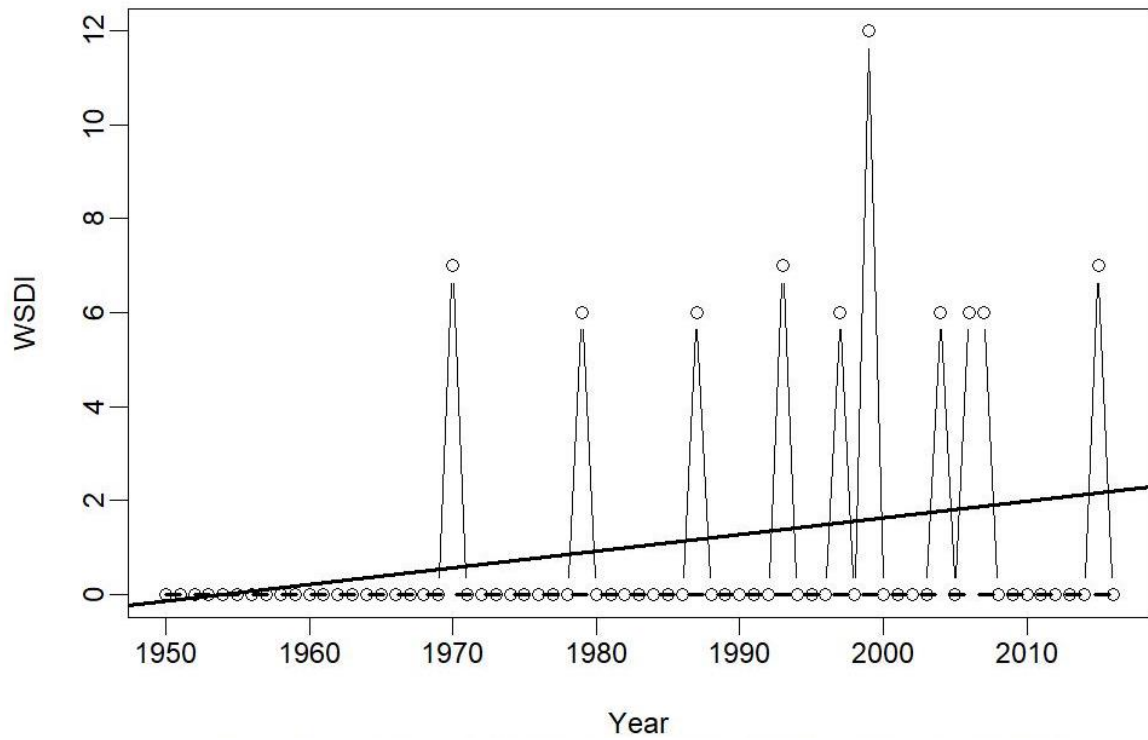
Supplementary figure 2: Seasonal and trend decomposition of average temperatures (°C) for northernmost Limpopo Province, 1950–2016. ‘Data’ = set of actual values; ‘seasonal’ component = period; ‘trend’ = increasing or decreasing direction in the data; and ‘remainder’ = residual. The grey bar at the right-hand side of each graph allows for a relative comparison of the magnitudes of each component.



Supplementary figure 3: Seasonal and trend decomposition of minimum temperatures ($^{\circ}\text{C}$) for northernmost Limpopo Province, 1950–2016. ‘Data’ = set of actual values; ‘seasonal’ component = period, ‘trend’ = increasing or decreasing direction in the data; and ‘remainder’ = residual. The grey bar at the right-hand side of each graph allows for a relative comparison of the magnitudes of each component.



Supplementary figure 4: Warm days (TX90p) – the percentage of days when maximum temperature (TX) is greater than the 90th percentile centred on a 5-day window for northernmost Limpopo Province, 1950–2016 ($R^2 = 30$, $p = 0.00$).



Supplementary figure 5: Warm spell duration indicator (WSDI) – the annual count of days with at least 6 consecutive days when TX is greater than the 90th percentile for northernmost Limpopo Province, 1950–2016 ($R^2 = 7.2$, $p = 0.03$).