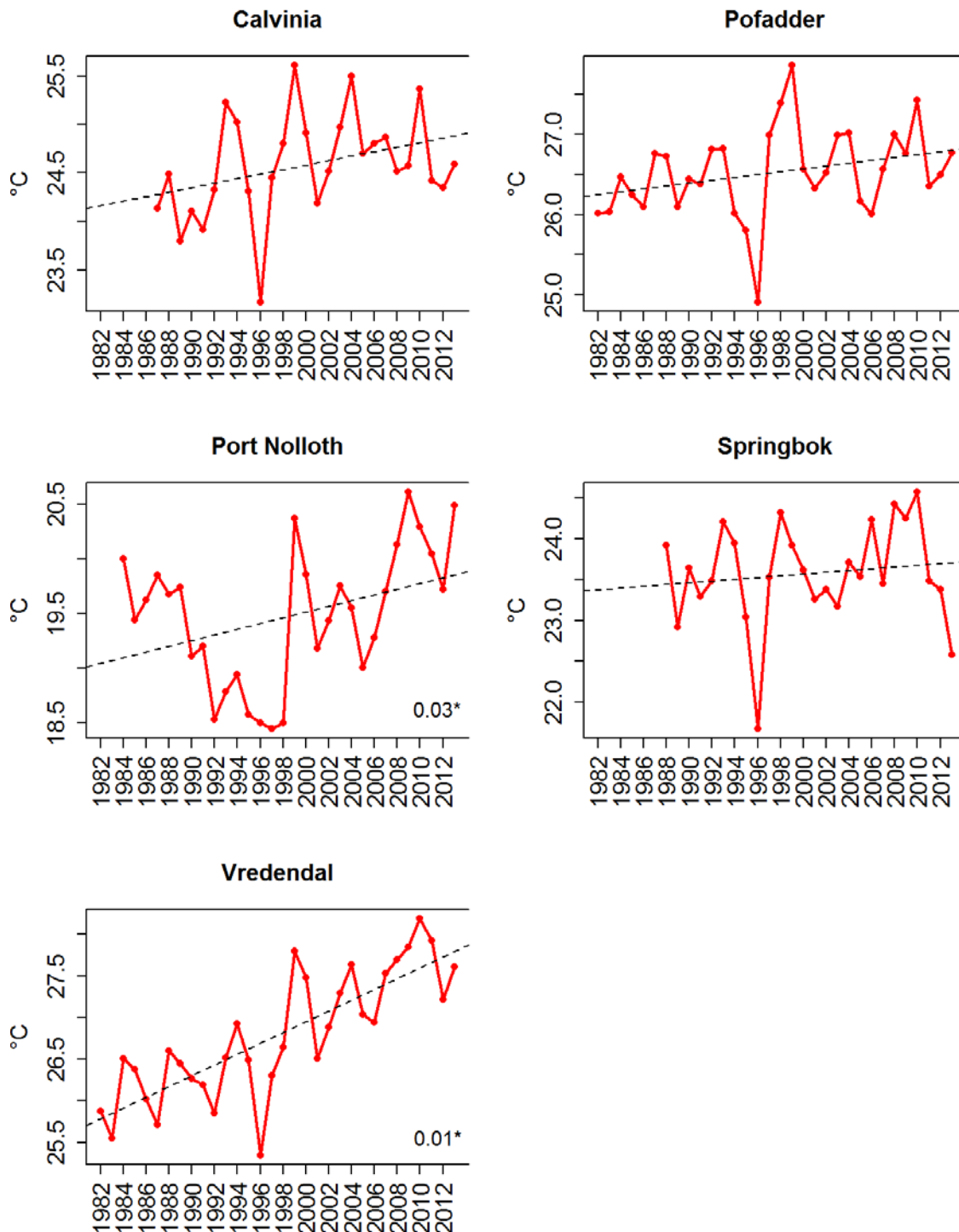
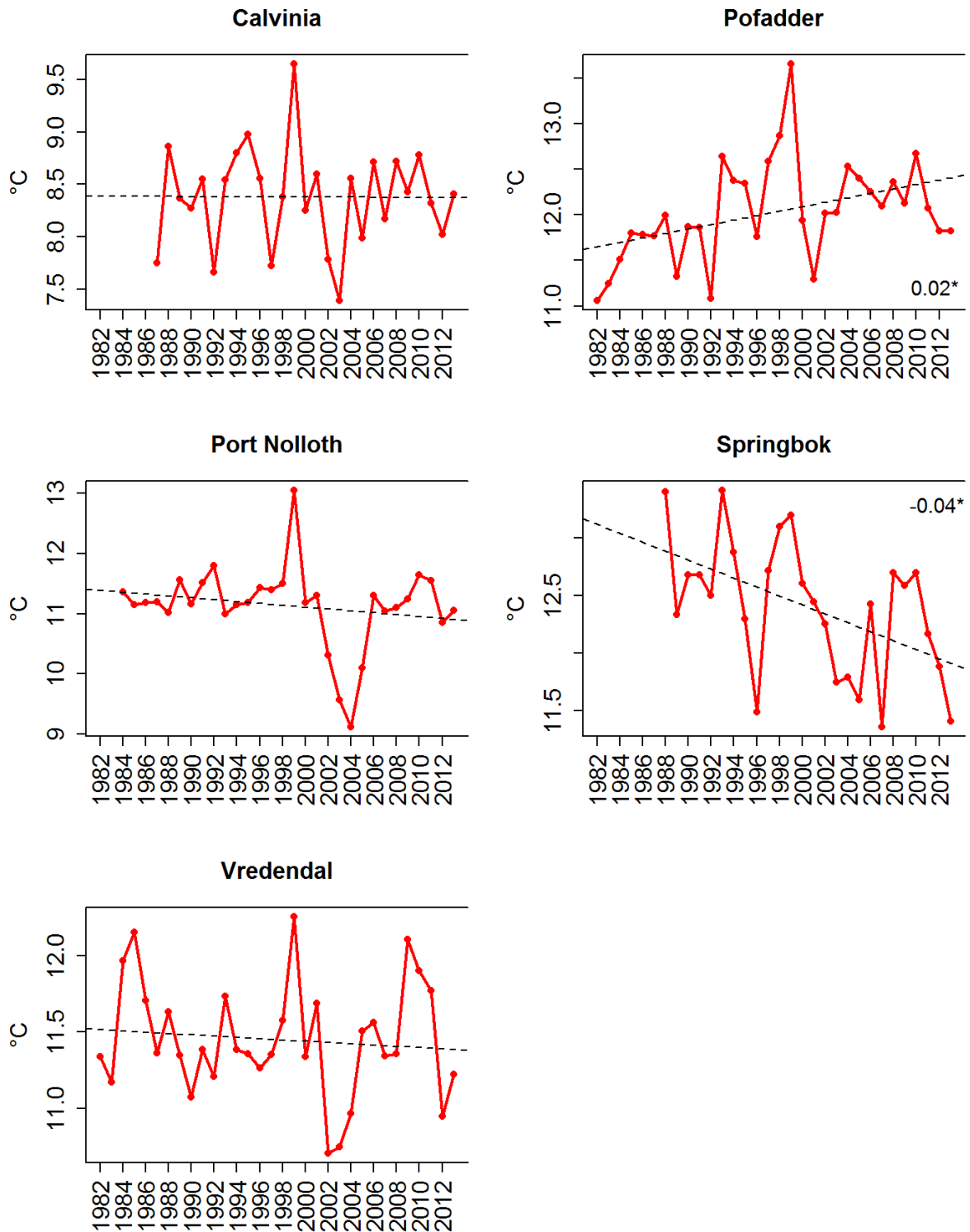


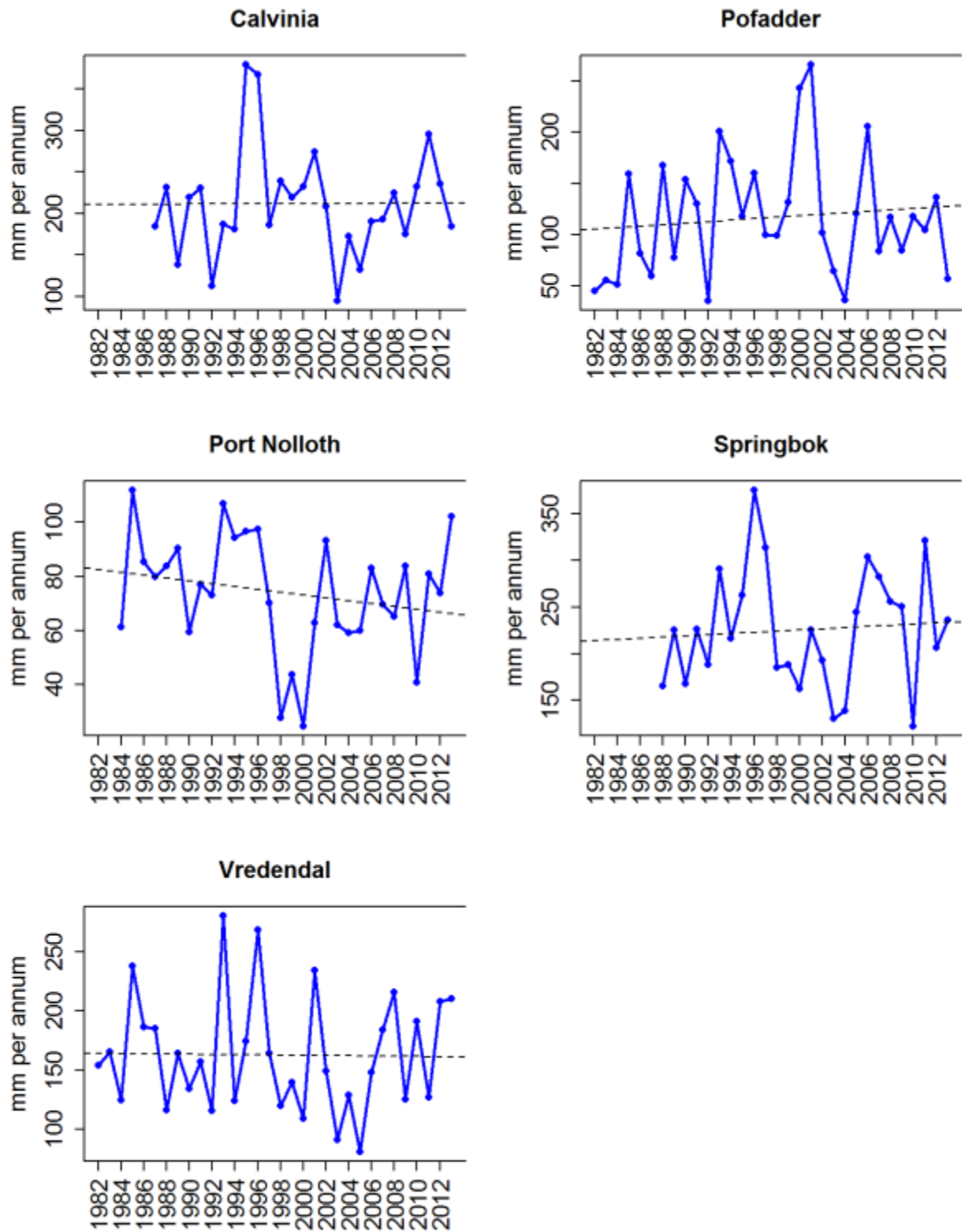
Online supplementary material to: Davis CL, Hoffman MT, Roberts W. Recent trends in the climate of Namaqualand, a megadiverse arid region of South Africa. *S Afr J Sci.* 2016;112(3/4), Art. 2015-0217, 9 pages. <http://dx.doi.org/10.17159/sajs.2016/20150217>



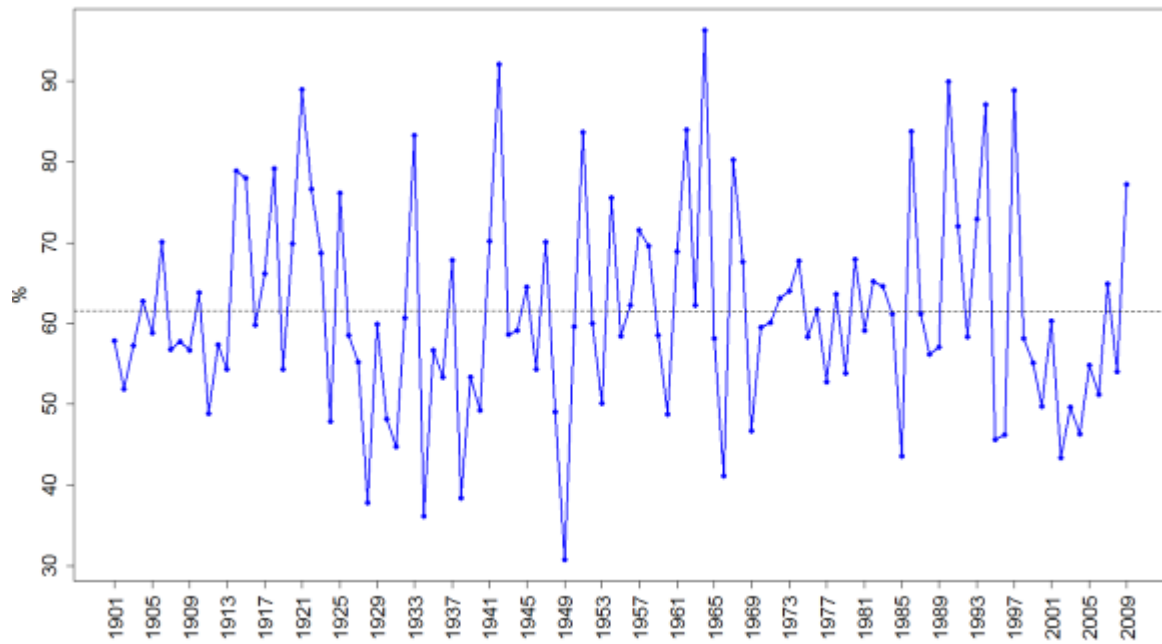
Supplementary figure 1: Mean annual maximum temperature (°C) for the five weather stations. The dotted black line represents the linear regression. Statistically significant trends (95th confidence level) are given.



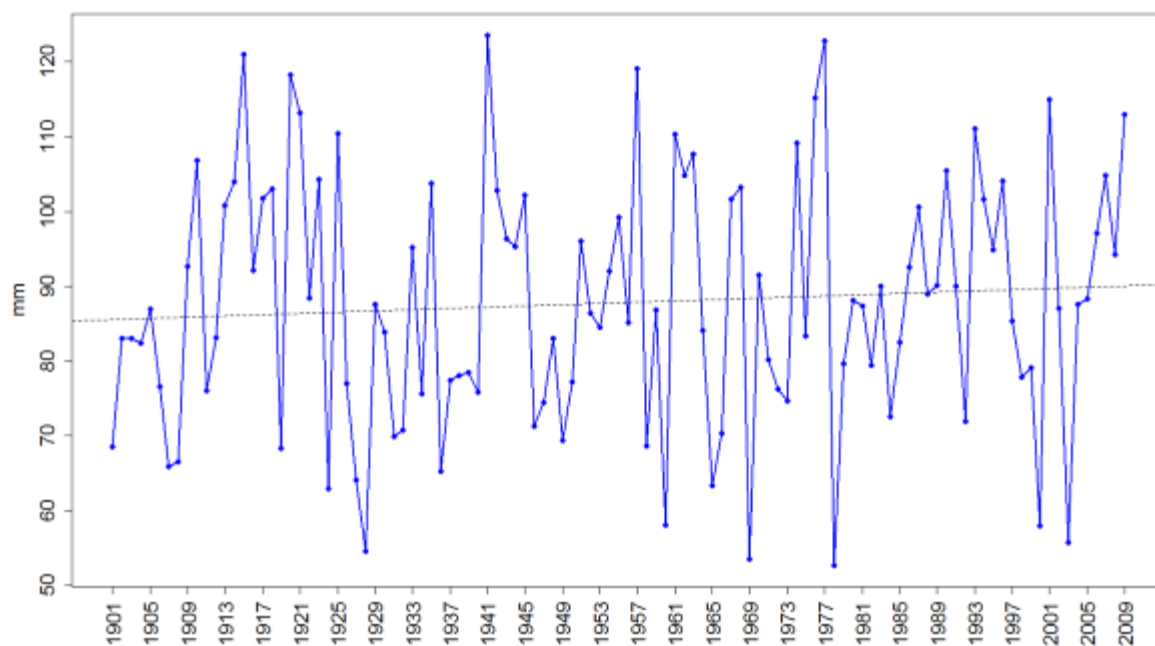
Supplementary Figure 2: Mean annual minimum temperature (°C) for the five weather stations. The dotted black line represents the linear regression. Statistically significant trends (95th confidence level) are given.



Supplementary figure 3: Mean annual rainfall (mm) for the five weather stations. The dotted black line represents the linear regression.



Supplementary figure 4: Annual coefficient of variation of rainfall expressed as a percentage for Namaqualand based on CRU TS 3.1 data set (1901–2009). The dotted black line represents the linear regression.



Supplementary figure 5: Trend in rainfall totals calculated for the growing season (May–Oct) based on CRU TS 3.1 data set (1901–2009). The dotted black line represents the linear regression.