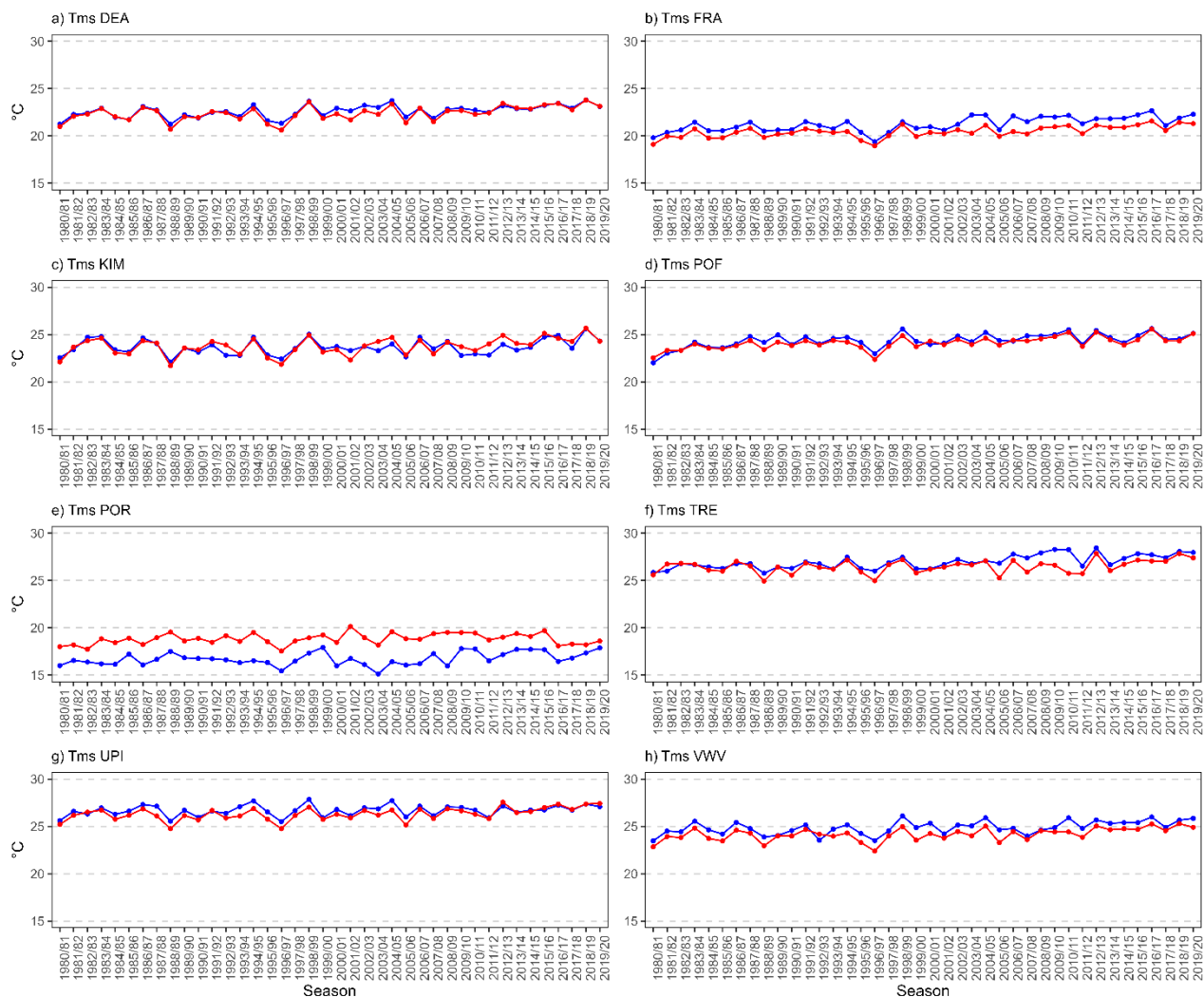


HOW TO CITE:

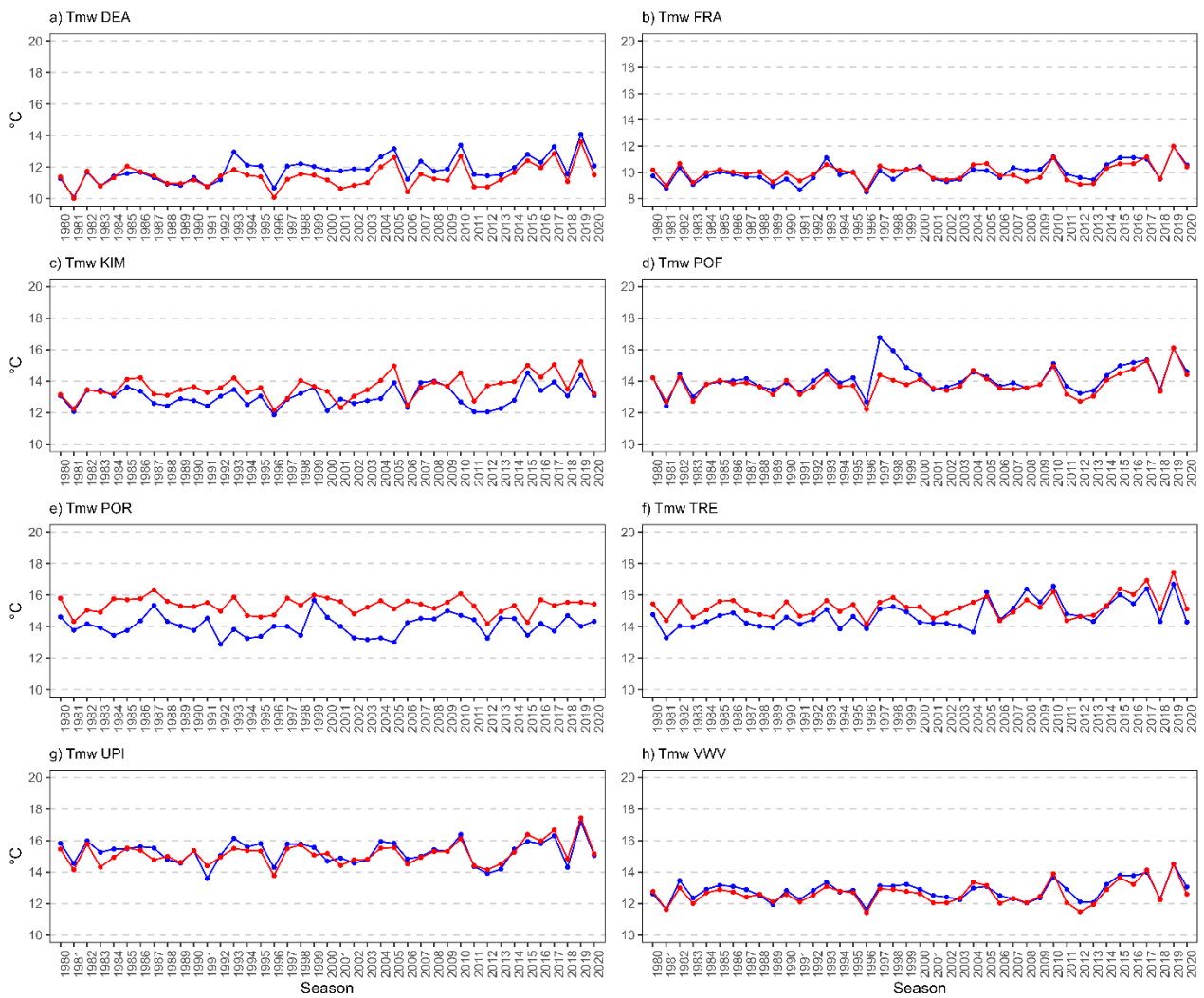
Kruger JA, Roffe SJ, Van der Walt AJ. AgERA5 representation of seasonal mean and extreme temperatures in the Northern Cape, South Africa [supplementary material]. S Afr J Sci. 2024;120(3/4), Art. #16043. <https://doi.org/10.17159/sajs.2024/16043/suppl>

Supplementary table 1: Details of the study weather stations, including their names and associated codes used for mapping and writing, their coordinates, and the percentage of missing raw data for the daily maximum (TX) and minimum (TN) temperature records

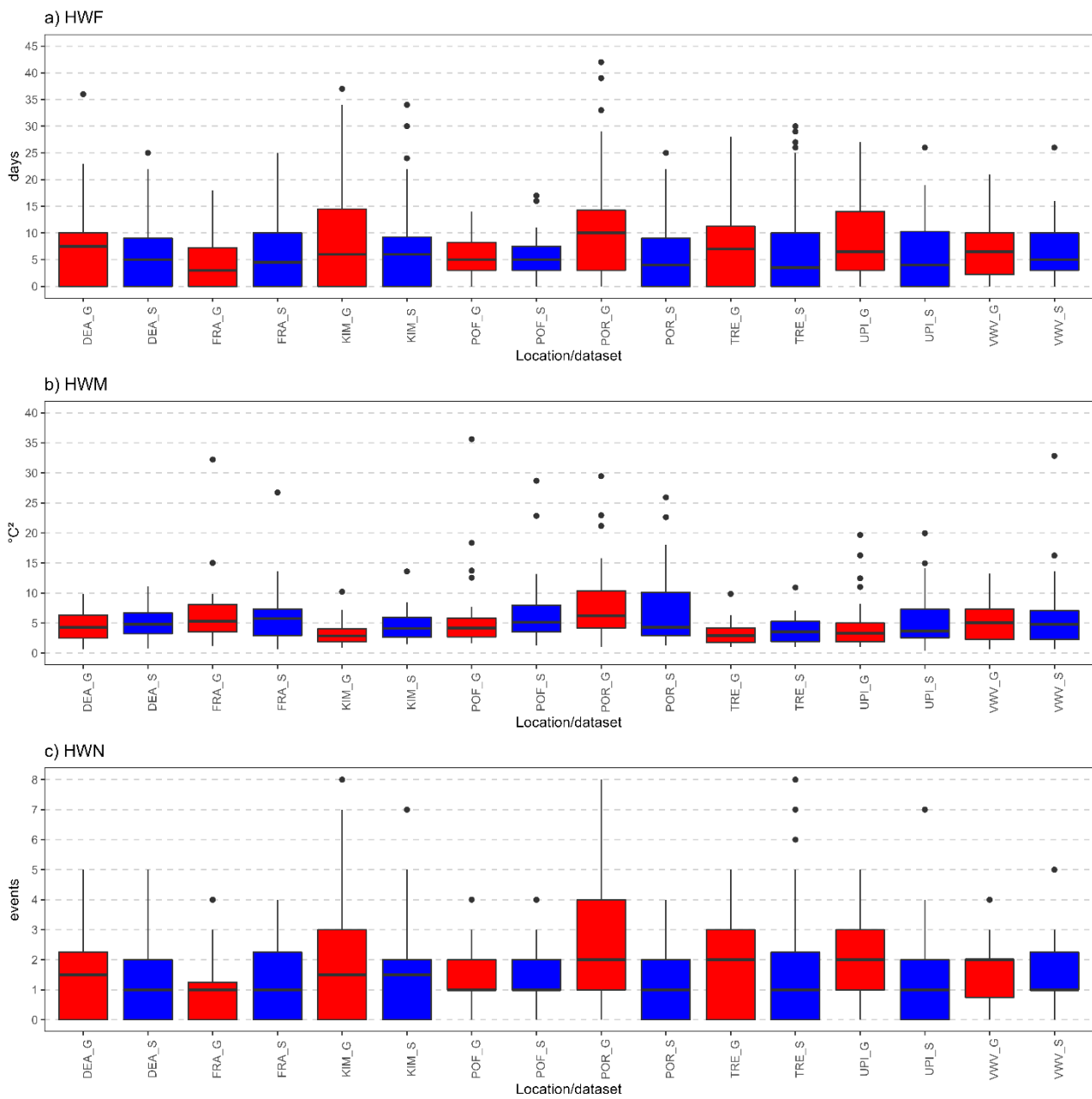
Station name	Station code	Latitude (°S)	Longitude (°E)	Elevation (masl)
De Aar	DEA	-30.67	23.99	1266
Fraserburg	FRA	-29.12	19.39	1266
Kimberley	KIM	-30.46	20.48	1201
Pofadder	POF	-26.47	20.61	990
Port Nolloth	POR	-31.92	21.51	13
Twee Rivieren	TRE	-29.25	16.87	889
Upington	UPI	-28.81	24.77	833
Vanwyksvlei	VWV	-28.40	21.27	965



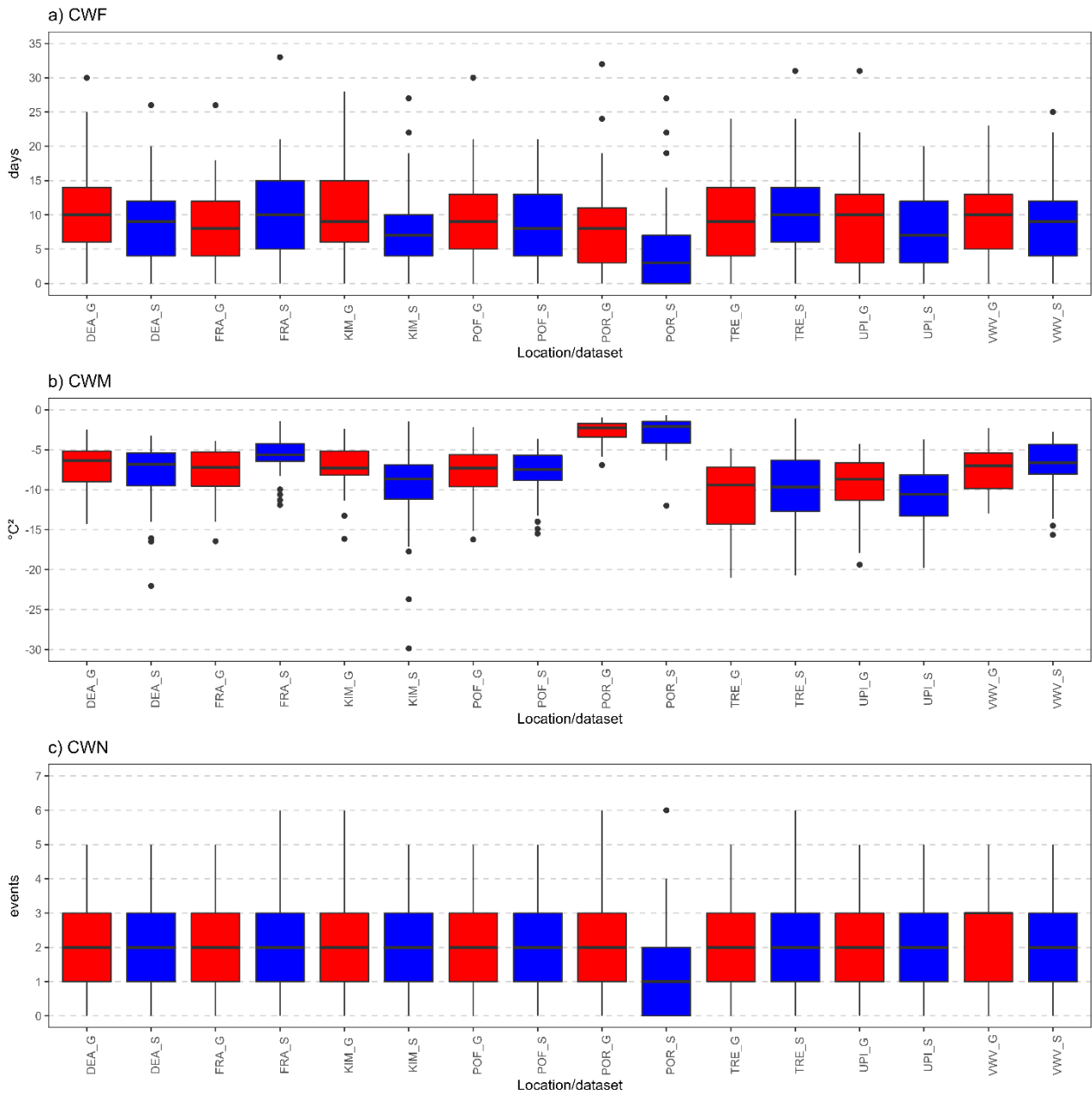
Supplementary figure 1: Time series plot depicting the distribution of average daily summer (Tms) temperatures for the AgERA5 (red) and SAWS (blue) data sets from 1980 to 2020 for locations mapped in Figure 1.



Supplementary figure 2: Time series plot depicting the distribution of average daily winter temperatures (Tmw) for the AgERA5 (red) and SAWS (blue) data sets from 1980 to 2020 for locations mapped in [Figure 1](#).



Supplementary figure 3: Box plots depicting the distribution of (a) the total number of days contributing to annual summer heatwave events (HWF), (b) the average temperature of annual summer heatwave events (HWM), and (c) the total number of summer heatwave events (HWN) for the AgERA5 (red) reanalysis and SAWS (blue) weather station data sets from 1980 to 2020 for locations mapped in [Figure 1](#).



Supplementary figure 4: Box plots depicting the distribution of (a) the total number of days contributing to annual winter coldwave events (HWF), (b) the average temperature of annual winter coldwave events (HWM), and (c) the total number of winter coldwave events (HWN) for the AgERA5 (red) reanalysis and SAWS (blue) weather station data sets from 1980 to 2020 for locations mapped in [Figure 1](#).